

広域

松阪市

多気郡多気町相可地区・外城田地区

多気町

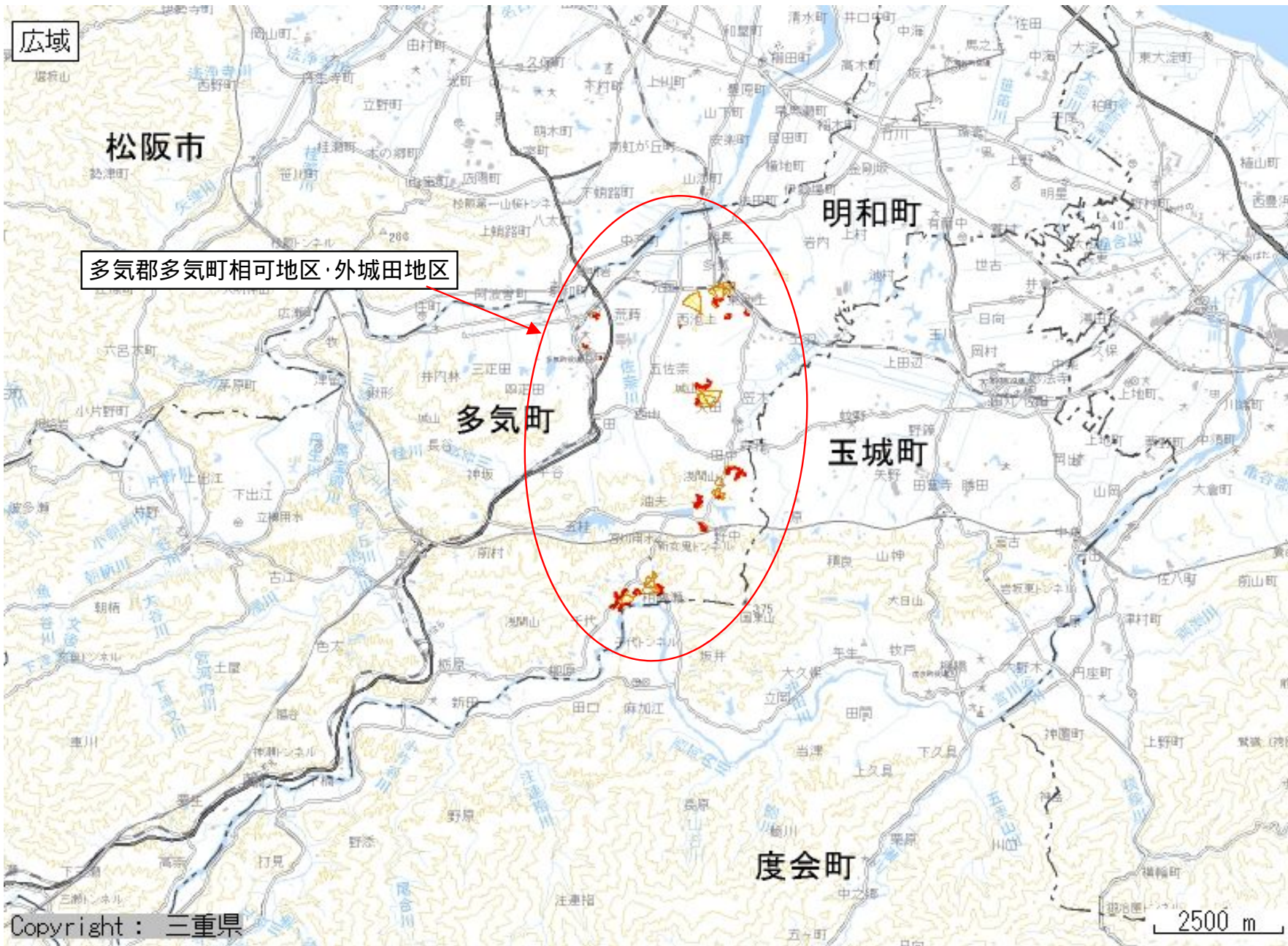
明和町

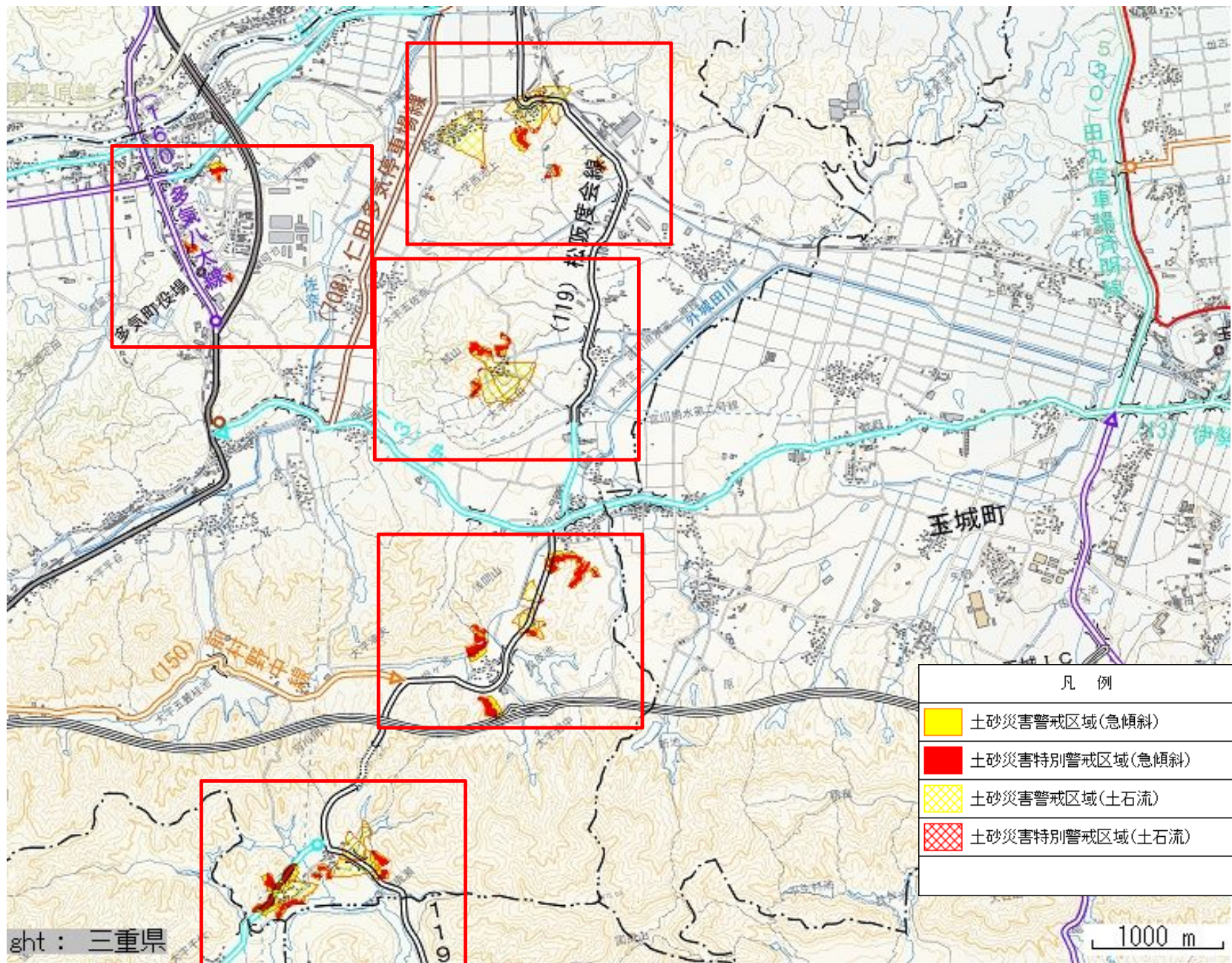
玉城町





度会町

Copyright : 三重県

2500 m



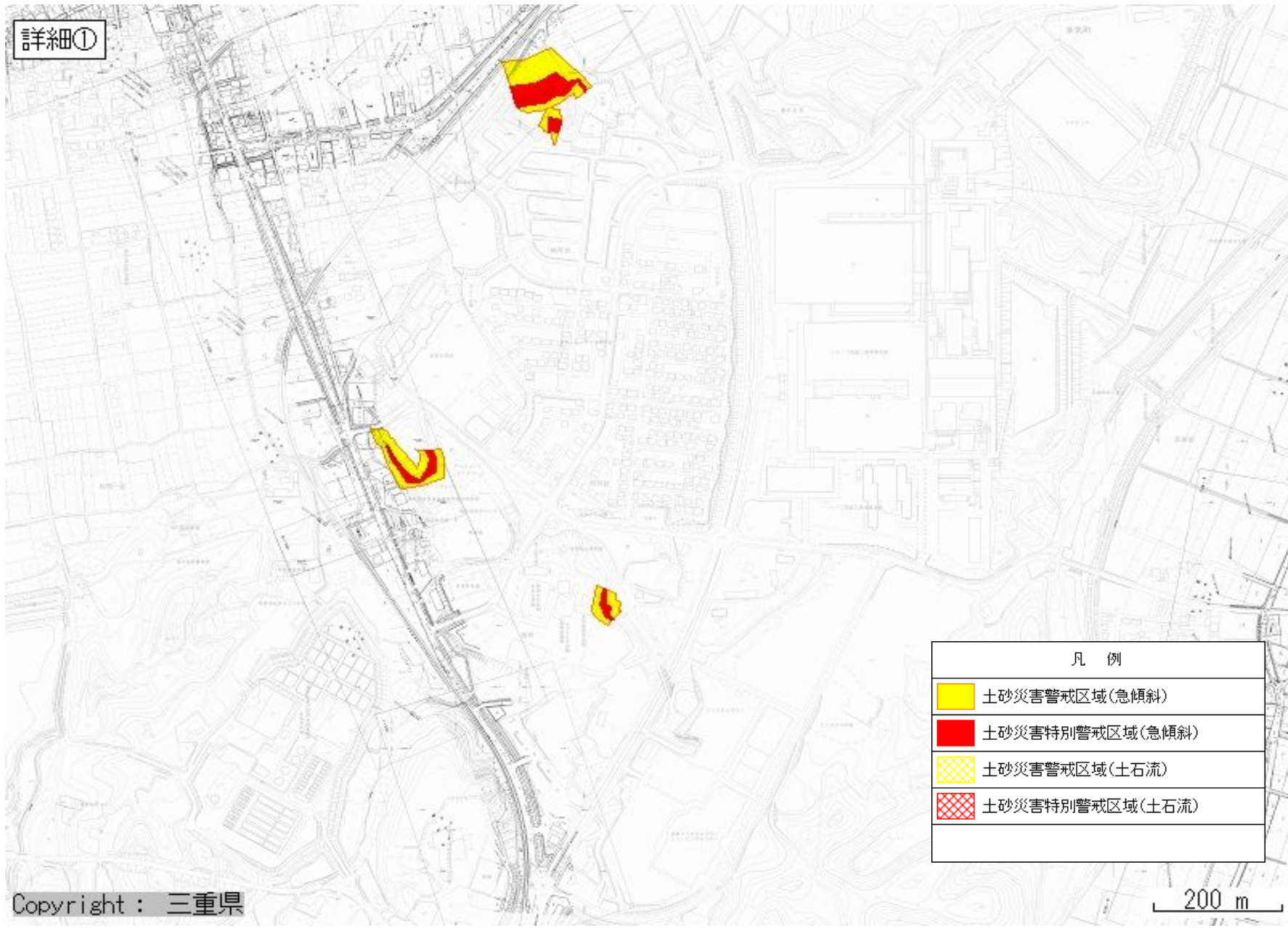






凡 例	
	土砂災害警戒区域(急傾斜)
	土砂災害特別警戒区域(急傾斜)
	土砂災害警戒区域(土石流)
	土砂災害特別警戒区域(土石流)

ght: 三重県

1000 m

詳細①

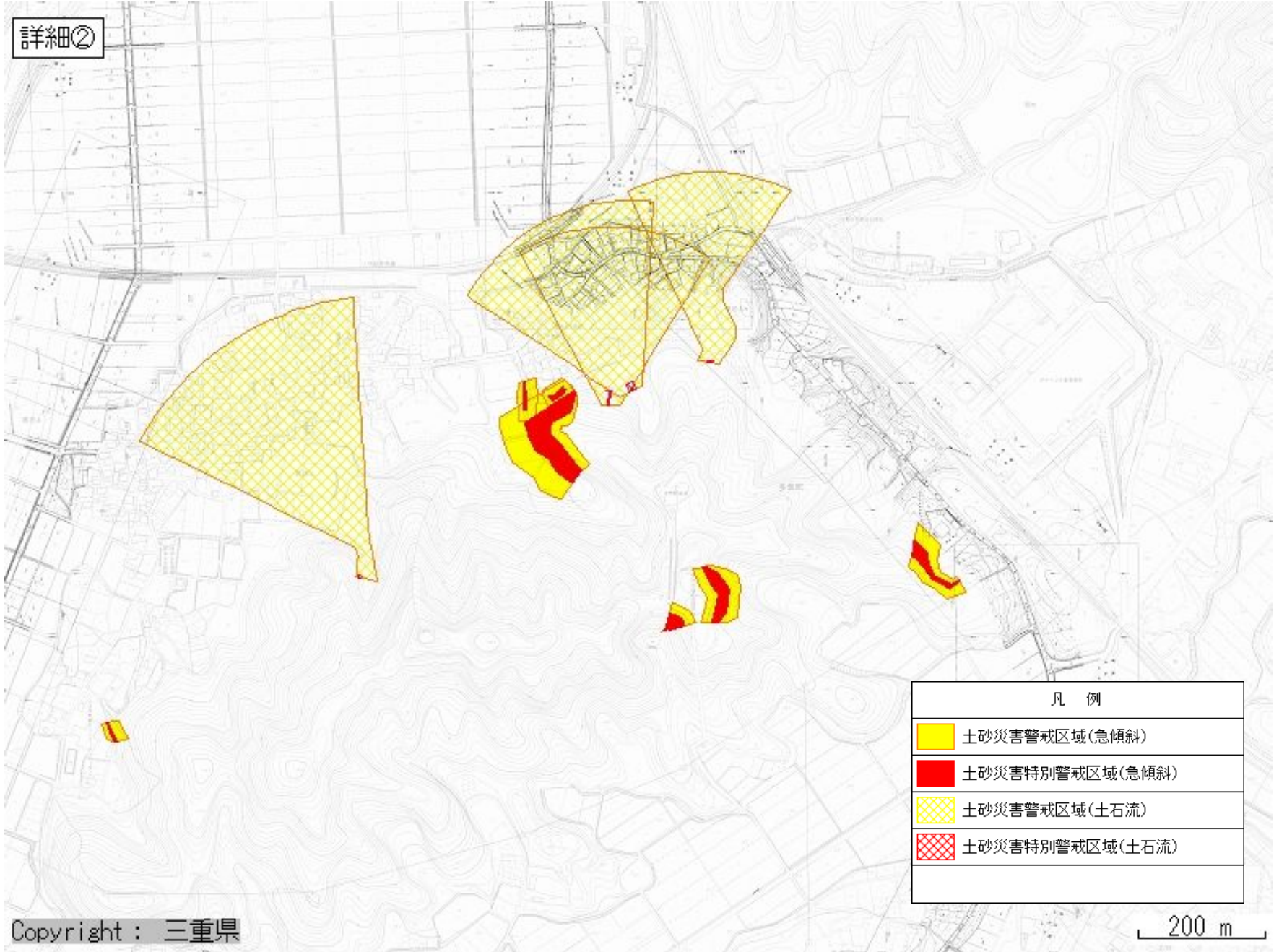


凡 例	
	土砂災害警戒区域(急傾斜)
	土砂災害特別警戒区域(急傾斜)
	土砂災害警戒区域(土石流)
	土砂災害特別警戒区域(土石流)

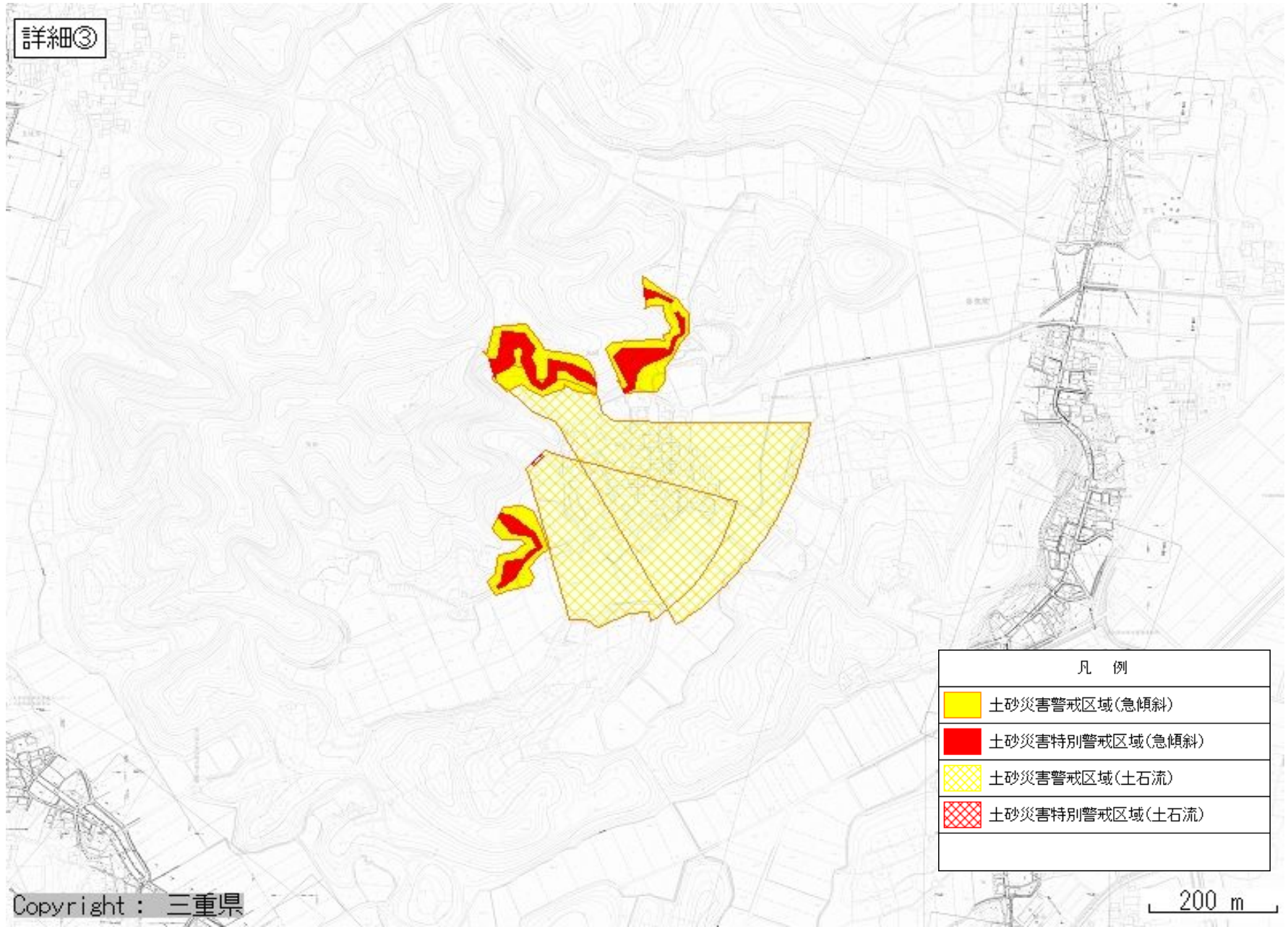
Copyright : 三重県

200 m

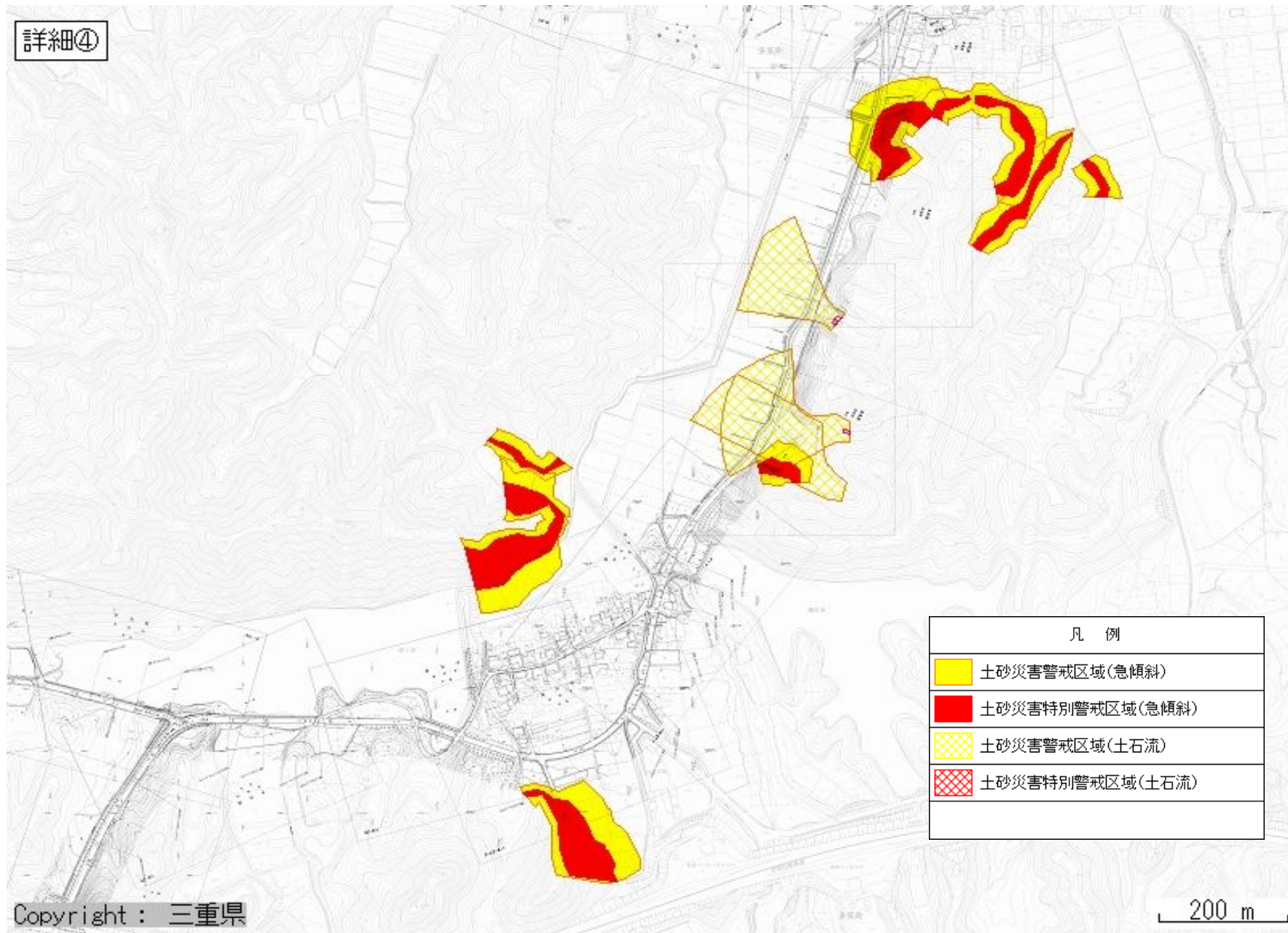
詳細②



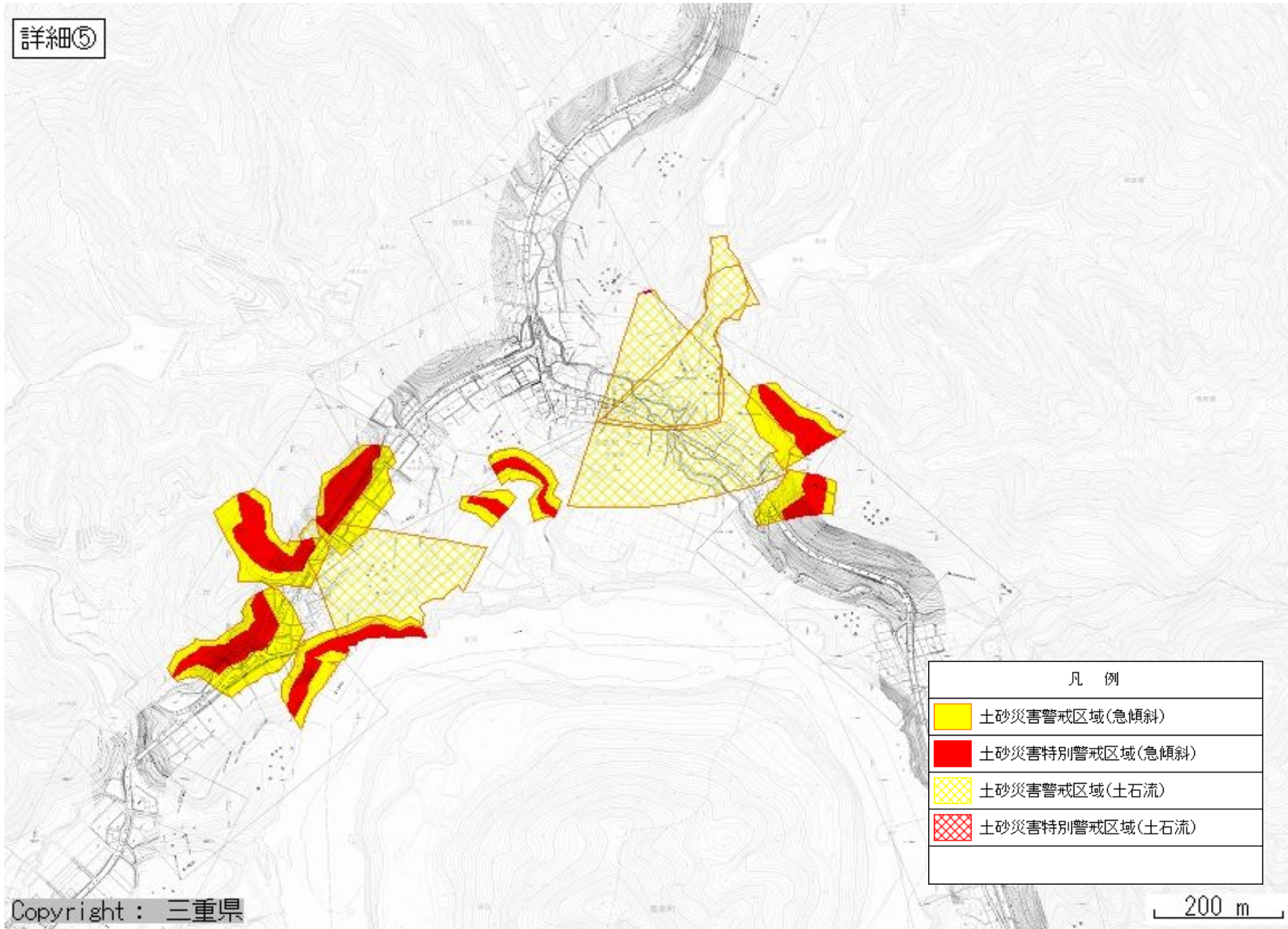
詳細③



詳細④



詳細⑤



Copyright : 三重県

200 m